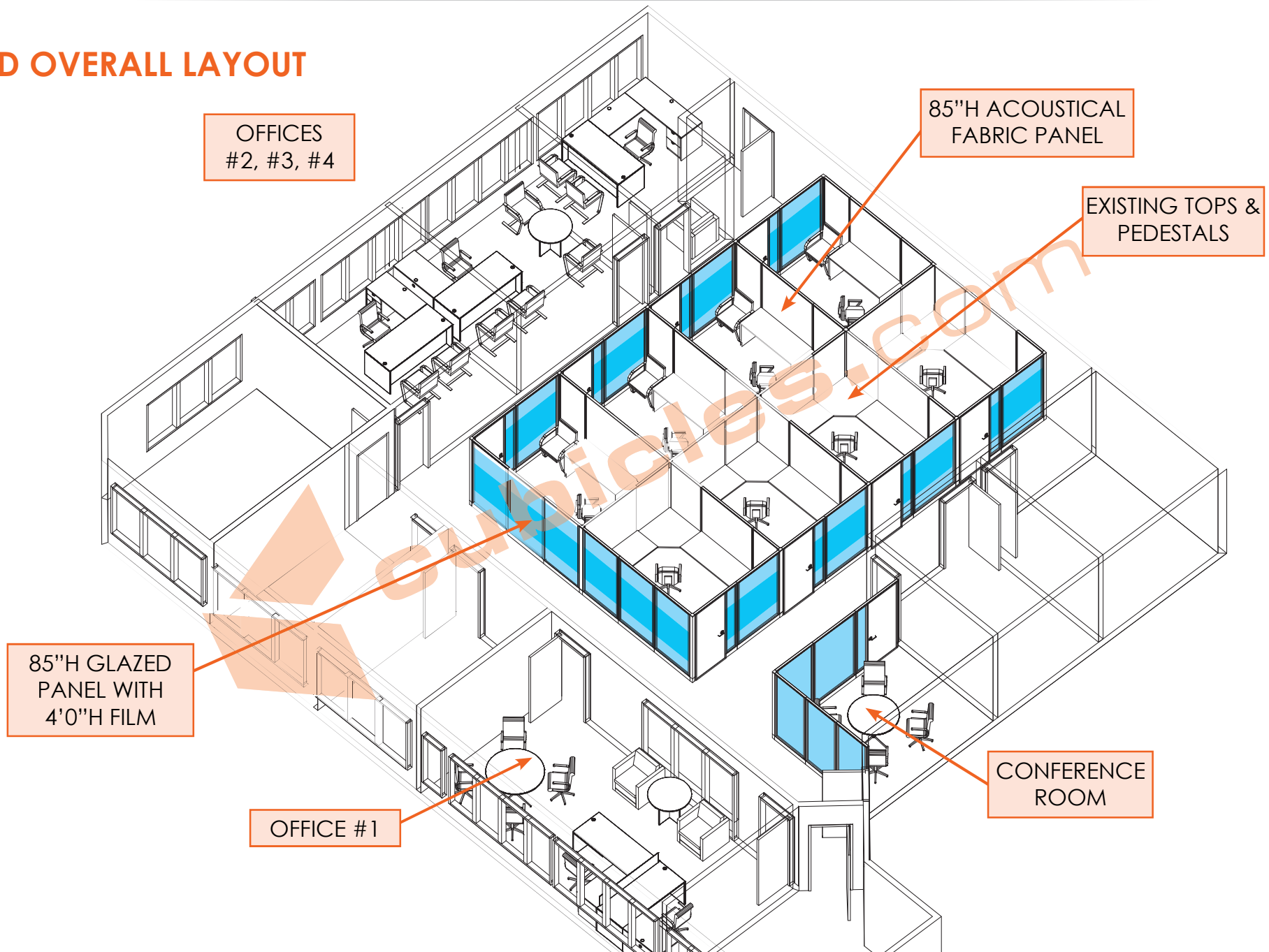


3D OVERALL LAYOUT



2D & 3D BLOW-UP LAYOUTS | MODULAR OFFICE WALLS

O2 MODULAR OFFICE WALLS | THIN BASE | GRADE 2 | POWERED & NON-POWERED

SCOPE:

OPEN AREA
 [8] 8'x10'-6" x 85"H ACOUSTICAL
 POWERED WORKSTATIONS WITH
 FRONT GLAZED PANELS & SWING
 DOOR
 *EXISTING TOPS AND PEDESTALS
 *ADDITIONAL HARDWARE NEEDED
 *SEATING NOT INCLUDED,
 AVAILABLE UPON REQUEST

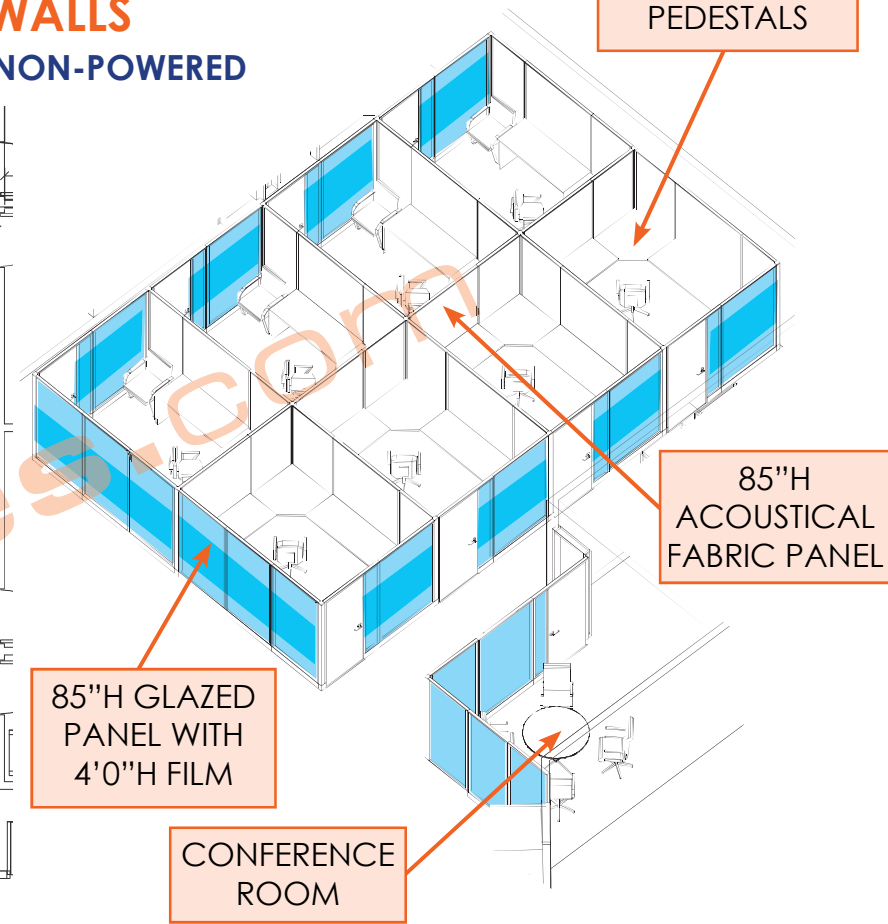
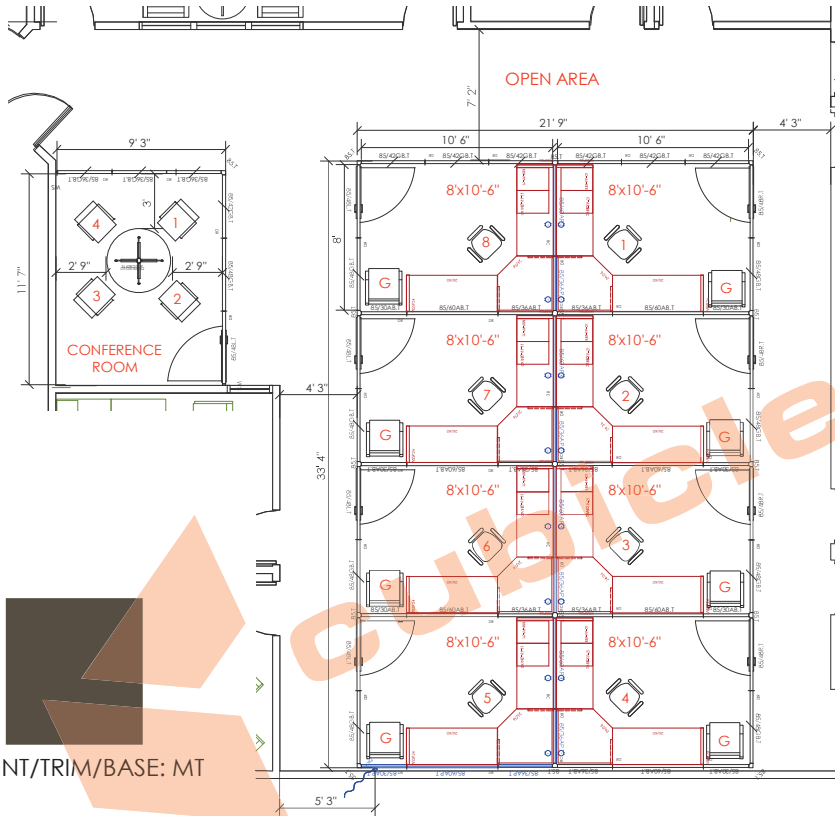
CONFERENCE ROOM
 [1] 9'-3" x 11'-7" NON-POWERED
 GLAZED MODULAR OFFICE WALLS
 [1] 42" DIA ROUND LAMINATE
 TABLE



FABRIC: ACE BURLAP



PAINT/TRIM/BASE: MT



2D & 3D BLOW UP LAYOUTS | OFFICE SUITES

OFFICES TO GO | SUPERIOR LAMINATE DESKING

SCOPE:

- OFFICE #1**
 [2] 6'x6' LAMINATE L-SHAPE DESK WITH BOX BOX FILE PEDESTAL
 [1] 48" DIA ROUND LAMINATE MEETING TABLE
 [1] 36" DIA ROUND LAMINATE TABLE
 [2] LUXHIDE LOUNGE CHAIRS

- OFFICES #2, #3**
 [1] 6'x6'-6" LAMINATE L-SHAPE DESK WITH BOX BOX FILE PEDESTAL /EA
 [1] 36" DIA ROUND LAMINATE TABLE /EA

- OFFICE #4**
 [1] 6'-6"x8" LAMINATE U-SHAPE DESK WITH BOX BOX FILE & FILE FILE PEDESTALS
 [1] LUXHIDE LOUNGE CHAIR

LAMINATE: ARTISAN GREY



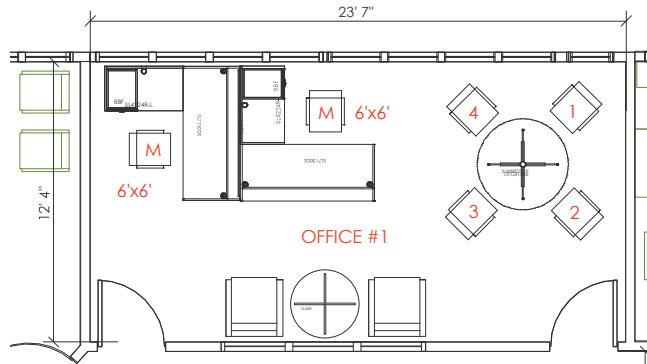
FABRIC: BANTAM RABBIT



HANDLES
SILVER



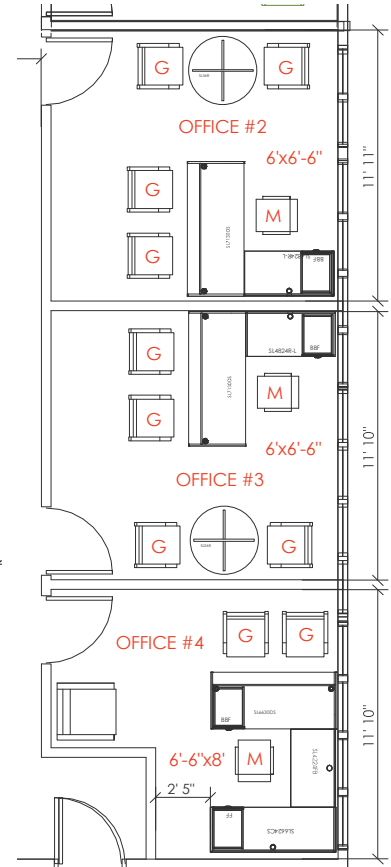
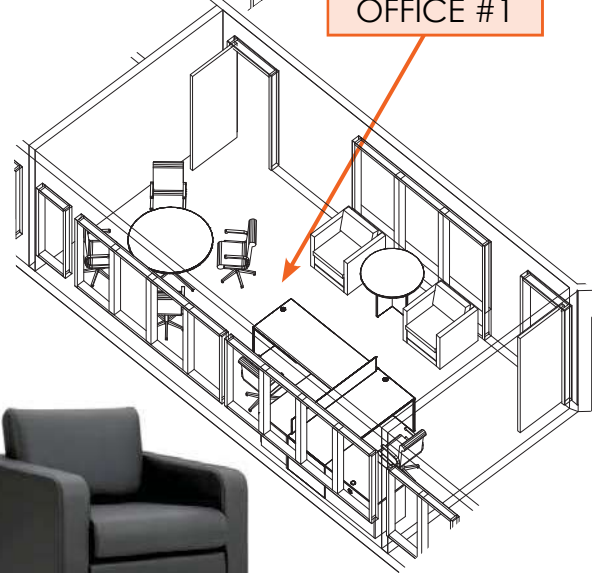
BLACK



OFFICES
#2, #3, #4



OFFICE #1



IMAGES FOR REFERENCE ONLY, NOT SPECIFIC TO THE PROJECT.